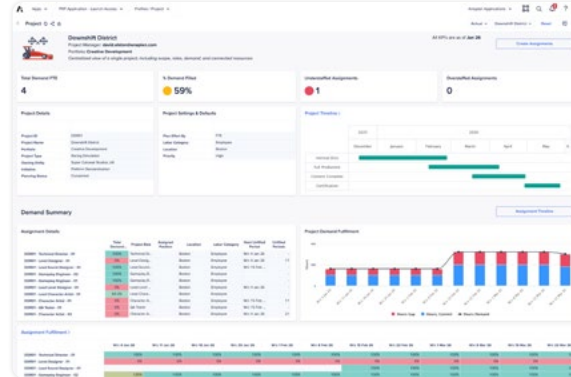


# Project Resource Planning application

Align resource capacity with strategic priorities  
to deliver every project on-time and on-budget



Many project-driven organizations struggle to align the right people, with the right skills, to the right projects at the right cost and time. Burdened by disconnected spreadsheets, siloed project management tools, and a lack of visibility into true workforce capacity, they face project delays, cost overruns, and diminished quality. This inability to accurately forecast resource demand or model scenarios in real-time puts strategic initiatives — and overall business growth — at significant risk.



## There's a better, faster way to plan

The **Anaplan Project Resource Planning application** connects project portfolios, resource capacity, and financial plans in a single, dynamic environment. It provides leaders with real-time visibility into workforce demand and supply, helping you prioritize projects and initiatives, proactively close capacity gaps, optimize sourcing strategies, and ensure successful execution across the enterprise.

## Key benefits

- **Deliver successful projects** by ensuring you have the right resources at the right time through agile scenario planning
- **Drive efficiency and decrease costs** by gaining full visibility into resource capacity, costs, and skills to improve allocation strategies
- **Increase portfolio agility** by modeling the impact of new projects or shifting timelines to adapt quickly to business changes
- **Win more business** by confidently committing to new projects, knowing you have the capacity and talent to deliver

## Are resource blind spots causing project delays and budget overruns?

- Are your best people truly aligned with your most strategic and profitable projects?
- How quickly can you model the full cost and resource impact of a new project on your current portfolio?
- Are you turning down new business because you can't get a clear, reliable view of your true capacity?
- Do you have real-time visibility into the financial impact of project delays and underutilized resources?
- When a project's scope changes, how long does it take to realign the resource plan and budget?
- Can you confidently commit to a project timeline and budget from day one?

## Solution details

### Strategic demand forecasting

- Aggregate project demand from PPM, CRM, and other sources into a single, forward-looking project view
- Translate high-level project needs into specific workforce requirements by skill, role, location, and cost

### Dynamic capacity planning

- Gain a real-time, unified view of your entire talent pool, including employees and contractors
- Understand true resource capacity by factoring in availability, existing projects, time off, and training

### Agile scenario modeling

- Move beyond static planning and model the full impact of changing project timelines, new business opportunities, or resource attrition
- Compare multiple “what-if” scenarios in real-time to find the optimal path forward

### Intelligent skills-based planning

- Proactively identify and close gaps between project skill requirements and your available talent pool
- Evaluate trade-offs between cost, timeline, and resource allocation to make data-driven staffing decisions

### Cross-portfolio optimization

- Analyze resource utilization and profitability across the entire project portfolio
- Re-prioritize initiatives and reallocate resources to your most strategic and profitable work with confidence



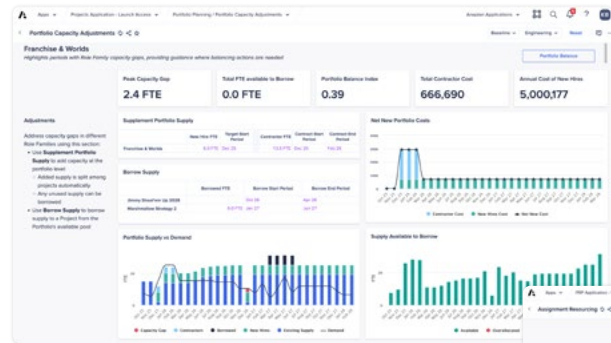
### Connected financial and workforce plans

- Natively connect resource plans with project budgets (**via Anaplan Project Cost Planning application**) and position and hiring plans (**via Anaplan Operational Workforce Planning application**)
- Ensure your resource strategy is always aligned with financial goals and talent acquisition capabilities

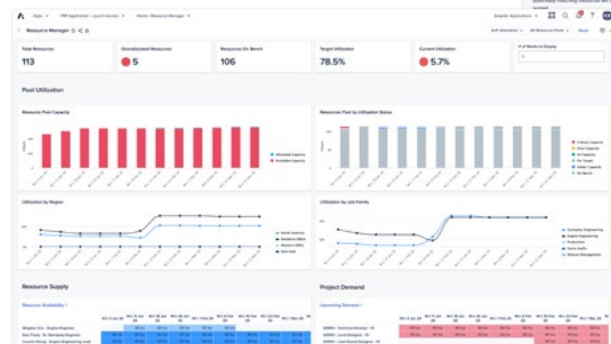
### AI-driven insights

- Engage with your Anaplan Workforce Analyst to ask questions, forecast trends, and get insights that align talent supply with strategic project demand in a single, connected plan

## Anaplan experience that is tailored for resource managers and leaders:

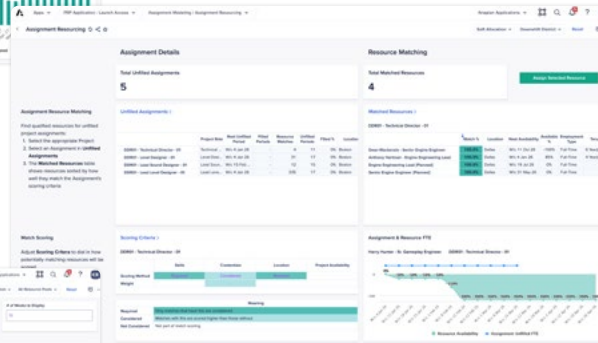


### Address capacity gaps in different role families



### Ready insight into demand, capacity, and utilization for Resource Managers

To further explore how the Anaplan Operational Workforce Planning application integrates with Anaplan's full suite of workforce planning capabilities, refer to the [Anaplan for Workforce Planning datasheet](#).



### Find skilled resources for unfilled project assignments

## The Anaplan platform offers

- **Rapidly deployable applications** with best practices that are configurable to customer requirements, upgradeable with availability of future release, and extensible to other use cases through standard Anaplan platform capabilities.
- Dashboards, reports, and analytics with data visualization provide a **single source of planning truth** on workforce and business data and performance.
- **“What-if” scenario and multi-dimensional modeling** powered by our high-performance calculation engine, producing ultra-fast calculations at an unprecedented scale.
- **AI agents** designed for natural language interactions — ask questions, uncover insights, forecast trends, streamline workflow, and drive action.
- **Collaborative and agile planning** across the enterprise from corporate to business units and across functions and operations (HR, finance, sales and marketing, supply chain).
- **Best-in-class security and data privacy** with role-based access control, user management, SSO support with SAML 2.0 compliance, and data encryption.
- A **highly extensible ecosystem** — collect, analyze, and plan in a single location using APIs, ETL connectors, and built-in integrations with CRM, PPM, HCM/HR, finance, operations, other systems of record, and data warehouses.

## About Anaplan

Anaplan is the only scenario planning and analysis platform designed to optimize decision-making in today's complex business environment so that enterprises can outpace their competition and the market. By building connections and collaboration across organizational silos, our platform intelligently surfaces key insights — so businesses can make the right decisions, right now.

More than 2,500 of the world's best brands continually optimize their decision-making by planning with Anaplan.

To learn more, visit [www.anaplan.com](https://www.anaplan.com)

