

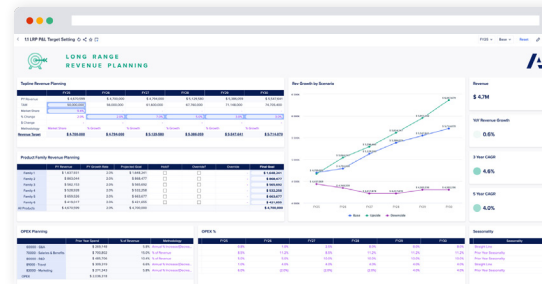
Integrated Financial Planning application with Anaplan CoPlanner



Next-gen financial planning with AI-infused insights is here

Struggling to navigate today's turbulent business landscape? You are not alone. Many finance leaders are held back by slow decision-making caused by outdated and fragmented systems and data silos. Many finance teams spend tremendous amounts of time on manual, error-prone processes and lack real-time data and insights, limiting valuable collaboration and partnership with business to identify key issues, make financial decisions, and seize opportunities.

You may also be using financial tools that heavily rely on IT involvement, restricting your ability to perform your activities quickly. Say good-bye to old systems and slow processes — elevate finance to support informed decision-making with speed, agility and confidence.



There's a better, faster way to plan

Anaplan is transforming finance planning with our purpose-built Integrated Financial Planning (IFP) application, providing a secure, accurate, and real-time planning overview of your enterprise to enhance decision-making and drive stronger outcomes. Anaplan's ready-to-deploy IFP application offers industry-leading best practices, enriched with supporting dashboards and reporting — built on the most agile planning platform. Quickly deploy the application with guided set-ups of core finance use cases and out-of-the-box best practices that easily extend to support your unique requirements.

Anaplan CoPlanner, an advanced AI assistant, directly embedded into the IFP application, enables you to analyze your finance planning data instantly for faster, more informed decision-making. Anaplan CoPlanner simplifies complex financial queries, uncovers trusted insights, and forecasts market trends through intuitive, natural language interactions. Leverage the power of our conversational AI assistant to elevate your role as a finance leader and fuel your organization toward greater success.

Key benefits

Rapid time to value: Easily deploy and maintain without coding, get best planning practices out-of-the-box — reducing planning cycle times and improving collaboration and efficiency.

Unified financial view: Achieve a single version of truth for planning across all financial statements and identifying growth drivers.

Uncover hidden insights: Anaplan CoPlanner swiftly analyzes vast amounts of your financial data and provides valuable insights and actionable steps to enhance your forecasts and decisions using natural language queries. Easily visualize your data to tell your story with clarity and impact.

Scenario planning: Use powerful scenario modeling and what-if analysis to evaluate best steps forward, optimizing resources.

Flexibility at the core: Leverage pre-built planning models or create customized models to meet unique business needs and scale with your business growth.

Ease of maintenance: Simplified application administration with access to support and documentation.

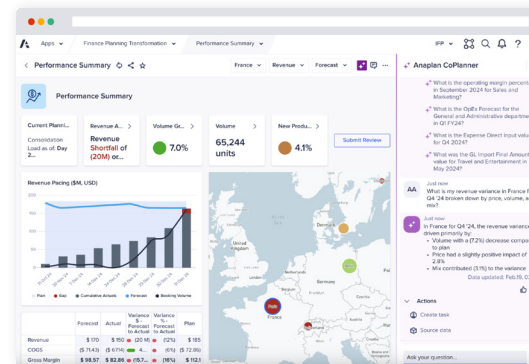
Key features

Integrated Financial Planning with Anaplan CoPlanner allows you to:

- Integrate ERP/GL data with a **pre-built data hub** featuring best practice dimensions to streamline financial planning.
- Quickly set up using our **configurator** and implement best practice-based FP&A processes including models, calculations, dashboards and reports, reducing implementation risk and fostering faster user adoption.
- Easily **extend the application** by building custom planning models tailored to your specific requirements.
- Make faster, more informed decisions using **built-in driver-based** planning, scenario modeling, and what-if analysis.
- Gain full visibility into your financial health with a detailed **balance sheet and cash flow** plan for real-time monitoring and decision-making.
- Access embedded **generative AI**¹ trained on the most frequently asked financial questions, allowing conversational queries for real-time, deep insights and in-depth analysis of your financial data.

¹ For more information on Anaplan CoPlanner, [go here](#).

² For more information on Anaplan XL Reporting, [go here](#).



- Ensure **interoperability** enabling enterprise connectedness with other functions through rule consistency and standardization across our applications.
- **Out-of-the-box deployment and integration** with our modern, best-in-class Anaplan Financial Consolidation application.
- Leverage our Anaplan XL Reporting² solution, a powerful **Excel plug-in** for enhanced reporting, ad-hoc analysis and fast user adoption.
- Gain access to all **future versions** of the IFP application as it gets upgraded for new functionality, enhanced capabilities, and latest innovation.

CUSTOMER STORY

Global Paint Manufacturer

Transform enterprise financial planning

A global paint company manufactures and distributes paints and coatings, generating over \$1 billion in annual revenue.

The company sought to:

- Transform their enterprise planning processes to improve financial planning
- Enhance data and financial visibility
- Streamline annual cycles
- Centralize their financial planning and reporting while supporting all plants consistently

With Anaplan's Integrated Financial Planning application, the company was able to:

- Standardize FP&A for efficiency and productivity gains
- Leverage our comprehensive finance solution, complete with out-of-the-box best practices, to accelerate time to value and deploy a fully functional system in less than 12 weeks.
- Enable planning processes on proactive versus reactive basis
- Realize significant cost and time savings

The Anaplan platform offers

- **“What if” scenario and multi-dimensional modeling** powered by our high-performance calculation engine, producing ultra-fast calculations at unprecedented scale.
- **Built-in dashboards, reporting, and analytics** with data visualization provide a single source of planning truth on business and workforce data and performance.
- **Collaborative and agile planning** across the enterprise from corporate to business units and across functions and operations (finance, sales and marketing, supply chain, and HR).
- **Best-in-class security and compliance** with role-based access control, user management, and SSO support with SAML 2.0 compliance, and data encryption.
- **A highly extensible ecosystem** — collect and analyze data in a single location using APIs, ETL connectors, and built-in integrations with HCM/HR, finance, operations, other systems of record, and data warehouses.

Some information in this document may have product roadmap that is intended to outline our general product direction and is provided for informational purposes only.



About Anaplan

Anaplan is the only scenario planning and analysis platform designed to optimize decision-making in today's complex business environment so that enterprises can outpace their competition and the market. By building connections and collaboration across organizational silos, our platform intelligently surfaces key insights — so businesses can make the right decisions, right now.

More than 2,400 of the world's best brands continually optimize their decision-making by planning with Anaplan.

To learn more, visit www.anaplan.com

Anaplan