



Anaplan Workflow

Automate and Act with Confidence and Speed

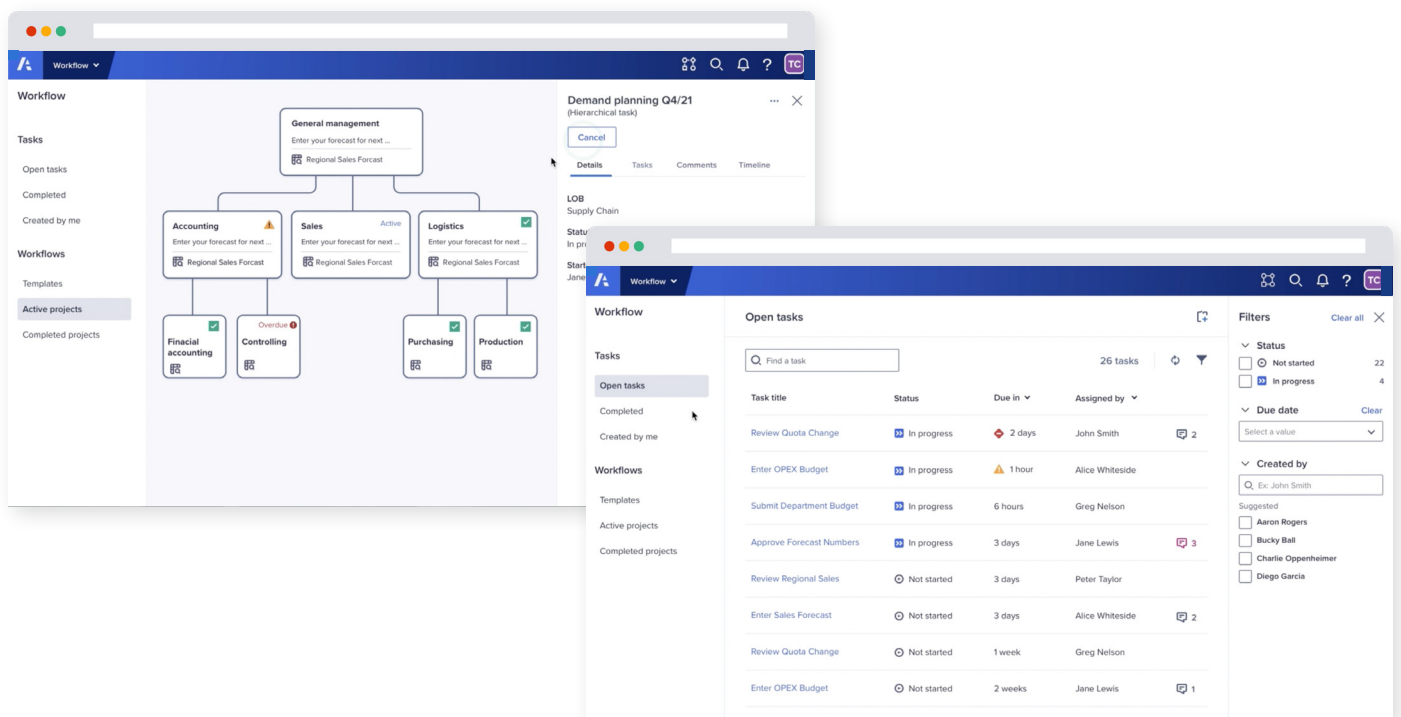
Executive summary

With the rise of hyper-automation as a key enabler of digital transformation, Anaplan Workflow empowers businesses by **digitizing their planning processes** and automating with other systems while speeding time to action through **efficient and effective conversation**.

Workflow enhances business planning by improving efficiency across the business with robust processes to spark meaningful two-way communication, allowing users, data and tasks to come together in real-time. With Workflow, businesses can orchestrate a wide range of tasks that are unique to their teams and unlock the full potential of Connected Planning within the company and their extended ecosystem.

With Workflow functionality, business users can execute on different projects and processes quickly by reducing coordination overhead. Users of all levels of expertise can quickly understand what tasks need to be completed and by whom. Teams can design customized, automated process flows to ensure the right actions happen at the right time, while providing visibility into the tracking and reporting on the progress of plans.

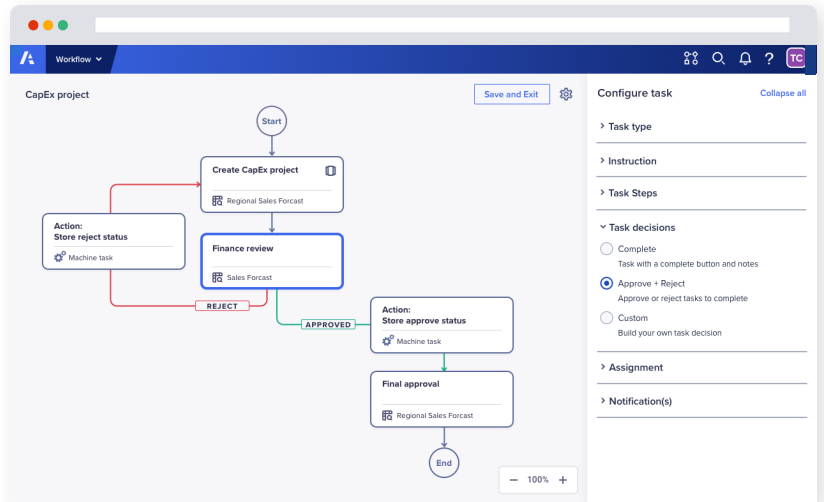
As part of the broader Anaplan vision framework, Workflow enables users to plan more efficiently and allows businesses to ensure that they execute their well thought-out plans with confidence.



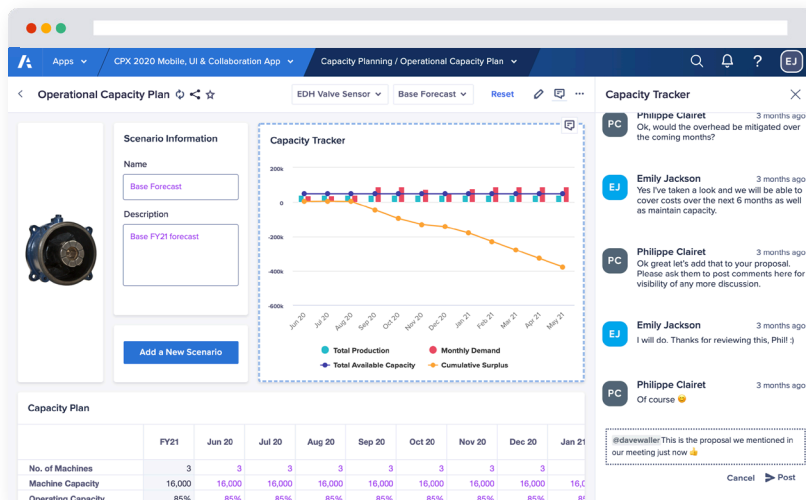
Structured and flexible automation

by digitizing your processes and automating with other systems*:

- Management: Individual and Group tasks, Task actions, Multi-step tasks, Hierarchical tasks and notifications
- Linear Workflow: Linear Workflow templates and audit trails
- Planning Projects



*These features are currently in alpha and are targeted for Early Access in the later half of 2022



*These features are available

Efficient and Effective Conversations and Decisions to speed time to action*:

- Notify actions to prompt and guide users when it's time to act
- @Mention users and trigger appropriate notifications to alert the right people to facilitate smooth handoffs
- Slack integrations to reach new users via Slackbot
- Commenting functionality and Comment Summary Views to keep up with conversations at a glance
- Easily share boards and worksheets to drive seamless collaboration

About Anaplan

Anaplan (NYSE: PLAN) is a transformative way to see, plan, and run your business. Using our proprietary Hyperblock™ technology, Anaplan lets you contextualize real-time performance, and forecast future outcomes for faster, confident decisions. Because connecting strategy and plans to collaborative execution across your organization is required to move business FORWARD today. Based in San Francisco, we have 20 offices globally, 175 partners and more than 1,750 customers worldwide.

To learn more, visit anaplan.com