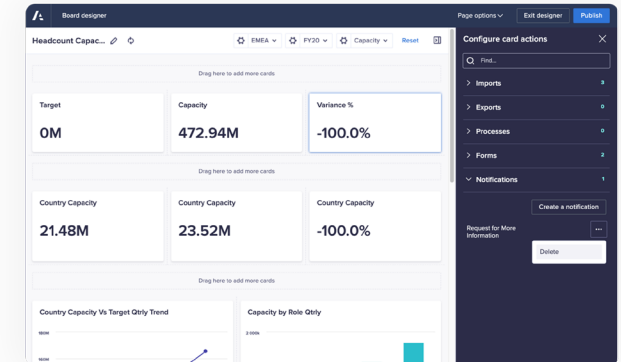
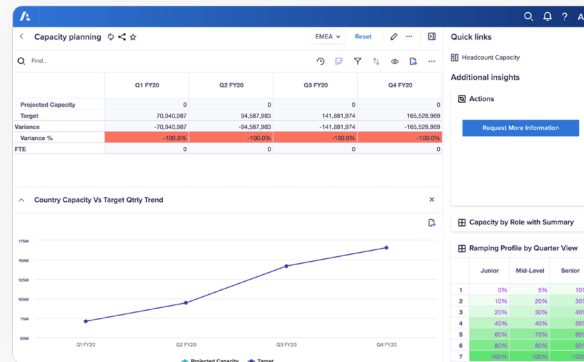


Collaboration

Seamless contextual discussions & effective execution

Planning and decision-making is a team sport that hinges on strong collaboration during the planning process. This is critical in tracking decision-making thought processes and assumptions based on a unified set of data.

Anaplan Collaboration enables faster planning and decision-making across any device via platform-wide collaboration capabilities, allowing users to efficiently work together and act.



Key benefits

Drive highly efficient, productive teams

Efficiently loop in key collaborators to deliver high-value output

- Notifications quickly connect critical collaborators across multiple business processes
- Engage with users at the right time in the process for them to take specific actions

Cultivate contextual discussions

Communicate in-context to quickly align and accelerate decision-making

- Share pages with customized messages for focused discussions on data that matters the most
- Receive notifications on e-mail, in-app or on mobile to stay current on the latest insights and decisions
- Discuss scenarios on the go for quick and agile decision-making

Break down silos and empower users to engage across devices in real-time

Foster seamless communication across functions

- Involve multiple stakeholders across functions with Sharing
- Transition plans smoothly from one user to another by sending Notify Actions across any device

Key features



Sharing

Easily share boards and worksheets with users to drive seamless collaboration for more informed plans.

- Search for Anaplan users with access to the model attached to the page and notify up to 20 users per share
- Copy unique page links to the clipboard to share via e-mail or chat
- Open page links on mobile devices and view them directly on the mobile app
- Access shared pages upon logging in via SSO



Notify Actions

Prompt and guide users when it's time to act to reduce communication loops.

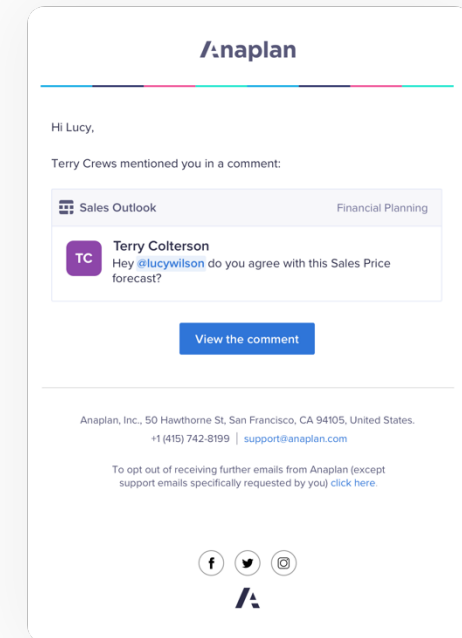
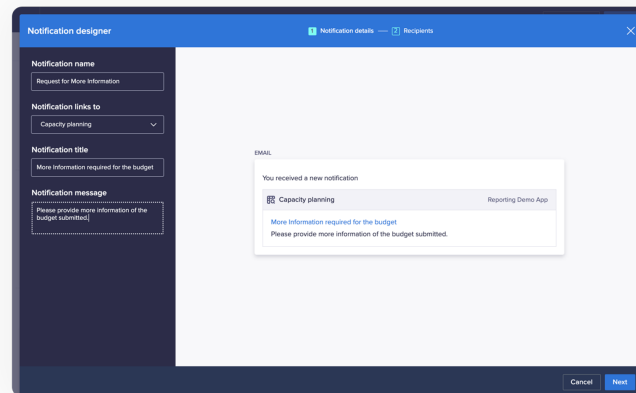
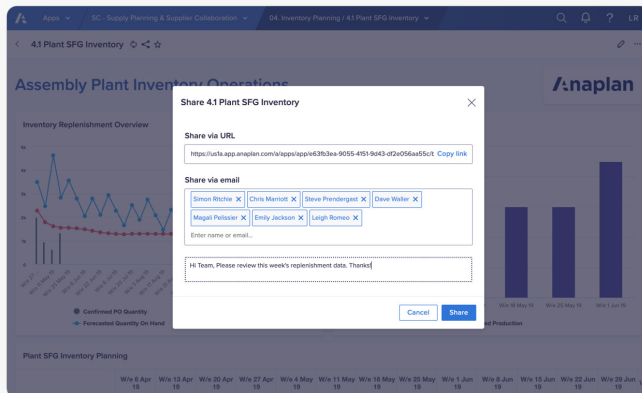
- Designate specific users to receive certain notifications
- Add a default message to notify users of required actions
- Customize messages to indicate specific user actions



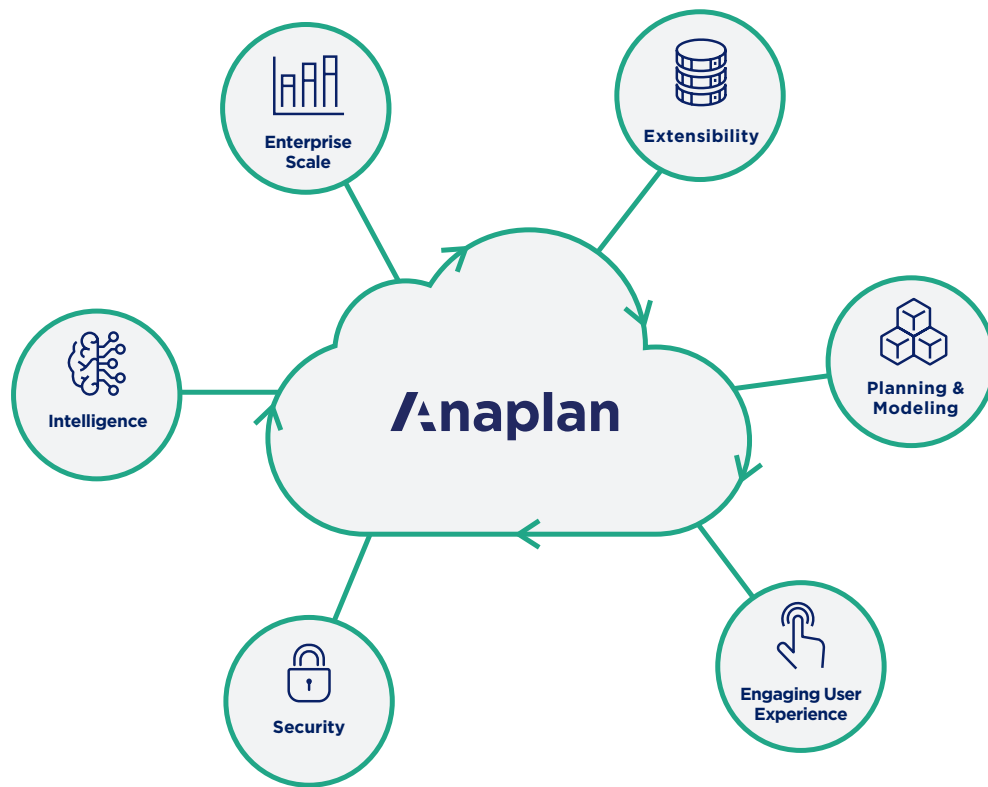
Notification

Alert specific users to facilitate smooth handoff from one team member to another.

- Send default notifications by email in Anaplan
- Email links to specific pages in the UX
- Enable end users to update notification preferences
- Enable end users to turn specific notification types on or off



Anaplan Platform



Enterprise scale

The Anaplan platform connects your entire enterprise, scaling as you grow and handling real-time changes at any size. Calculations stay consistent and rapid for all data sets and any number of users.

Extensibility

The Anaplan platform collects and analyzes data in a single location, enabling both high-level and granular analyses and facilitating data-sharing with all stakeholders. APIs, ETL connectors, and built-in integrations easily communicate with other solutions.

Planning and modeling

Our in-memory Hyperblock[®] engine enables multi-dimensional scenario modeling with unlimited constraints, allowing companies to model even the most complicated business scenarios and stay ahead of changes in the market. The platform maintains 100% consistency across all model changes.

Engaging user experience

The Anaplan user experience puts the whole enterprise on a single platform. Model-building is intuitive and requires zero coding knowledge. The whole company shares real-time data across devices and solutions, enabling rapid decision-making and unprecedented flexibility.

Security

Robust protection keeps your business's data safe. Best-in-class security and compliance include BYOK, role-based access control, user management, SSO support with SAML 2.0 compliance, and data encryption at rest.

Intelligence

Embedded optimization including Optimizer[™], over thirty predictive algorithms, and evolving AI capabilities transform complicated inputs into actionable recommendations. Machine learning intelligence speeds up decision-making across use cases.

About Anaplan

Anaplan (NYSE: PLAN) is pioneering the category of Connected Planning. Our platform, powered by our proprietary Hyperblock[™] technology, purpose-built for Connected Planning, enables dynamic, collaborative, and intelligent planning. Large global enterprises use our solution to connect people, data, and plans to enable real-time planning and decision-making in rapidly changing business environments to give our customers a competitive advantage. Based in San Francisco, we have over 20 offices globally, 175 partners, and more than 1,400 customers worldwide.

To learn more, visit anaplan.com.