

# COLLABORATION

Seamless contextual discussion  
and effective execution

Planning and decision-making is a team sport that hinges on strong collaboration during the planning process. This is critical in tracking decision-making thought processes and assumptions based on a unified set of data.

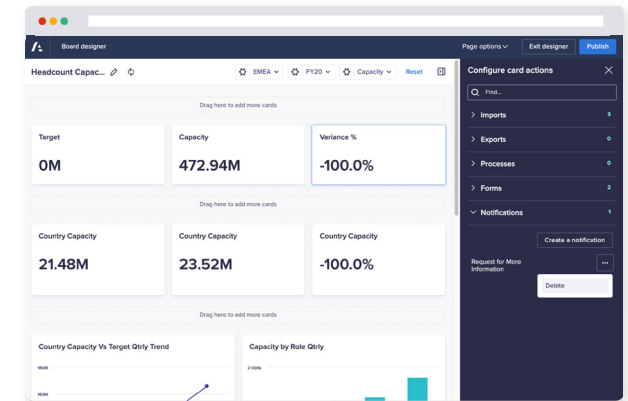
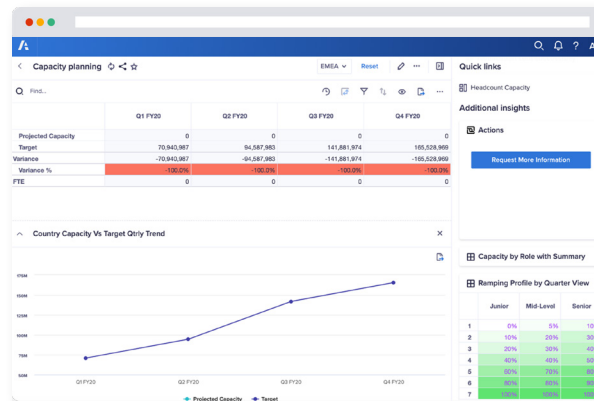
Anaplan Collaboration enables faster planning and decision-making across any device via platform-wide collaboration capabilities, allowing users to efficiently work together and act.

## Key Benefits

### Drive highly efficient, productive teams

Efficiently loop in key collaborators to deliver high-value output

- Add comments to track assumptions behind specific data and plans to easily adjust
- Notifications quickly connect critical collaborators across multiple business processes
- Engage with users at the right time in the process for them to take specific actions



### Cultivate contextual discussion

Communicate in-context to quickly align and accelerate decision-making

- Share pages with customized messages for focused discussions on data that matters the most
- Receive notifications on e-mail, in-app or on mobile to stay current on the latest insights and decisions
- Discuss scenarios on the go for quick and agile decision-making

### Break down silos and empower users to engage across devices in real-time

Foster seamless communication across functions

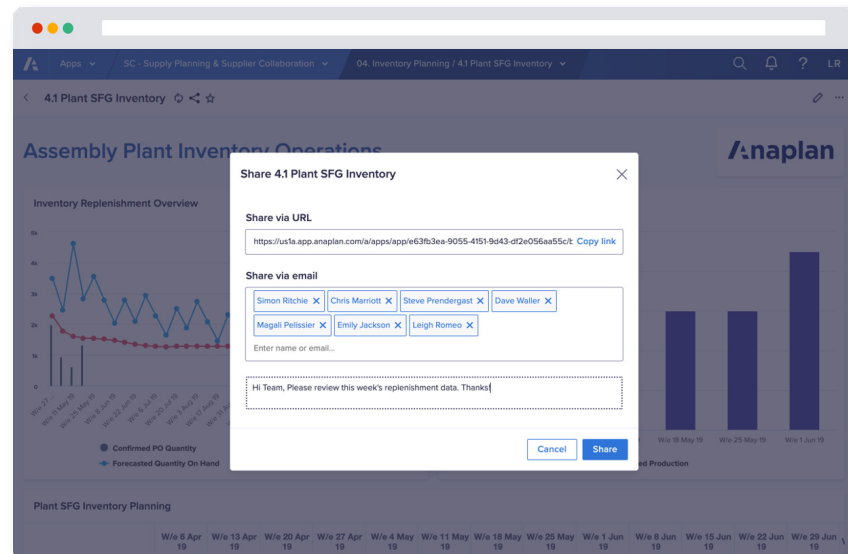
- Involve multiple stakeholders across functions with Sharing and Commenting
- Streamline discussions with real-time Commenting threads to reduce communication loops
- Transition plans smoothly from one user to another by sending Notify Actions across any device

# Key features

## Sharing

Easily share boards and worksheets with users to drive seamless collaboration for more informed plans.

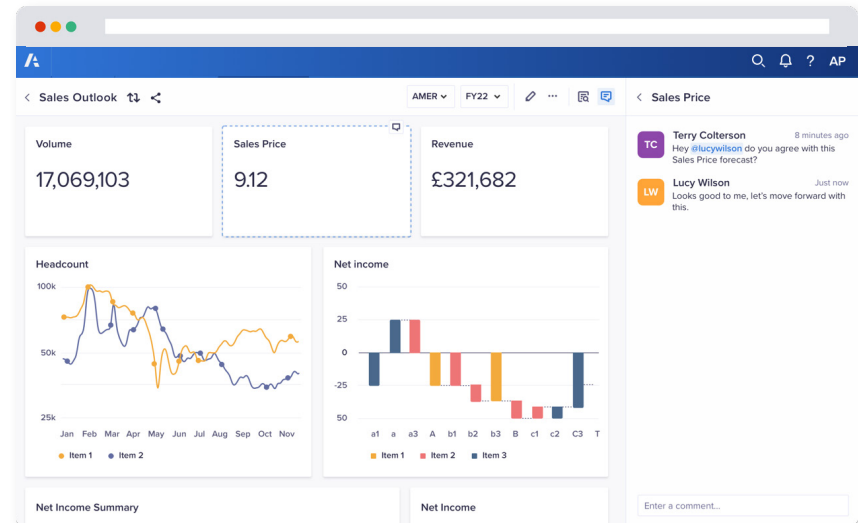
- Search for Anaplan users with access to the model attached to the page and notify up to 20 users per share
- Copy unique page links to the clipboard to share via e-mail or chat
- Open page links on mobile devices and view them directly on the mobile app
- Access shared pages upon logging in via SSO



## Commenting

Bring more users directly into the conversation at the right point in the planning process to expedite decision-making.

- Comment on cards to spark discussions on specific boards
- Enable separate discussions by context
- View all conversations at a card level

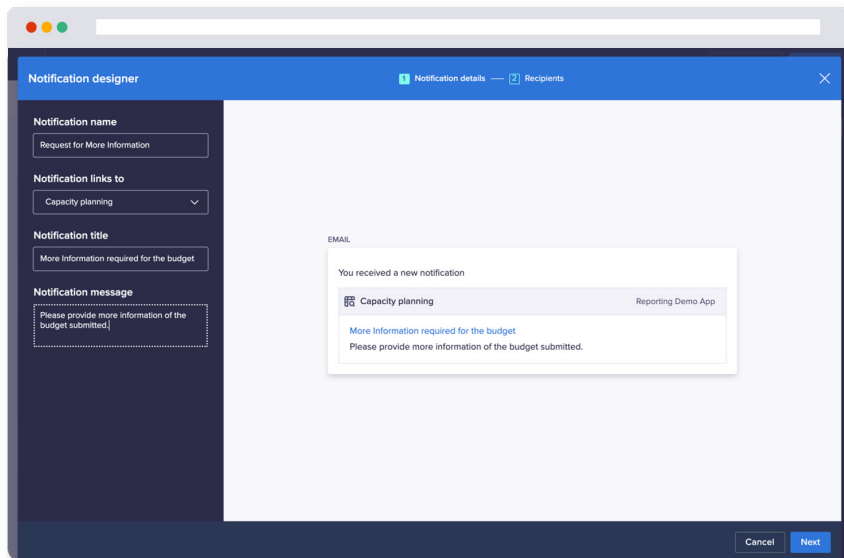


# Key features

## Notify Actions

Prompt and guide users when it's time to act to reduce communication loops.

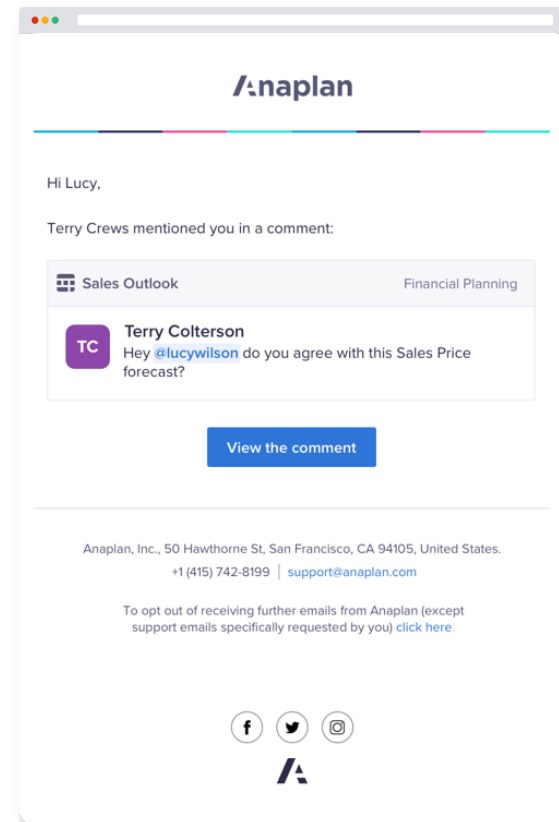
- Designate specific users to receive certain notifications
- Add a default message to notify users of required actions
- Customize messages to indicate specific user actions



## Notification

Alert specific users to facilitate smooth handoff from one team member to another.

- Send default notifications by email in Anaplan
- Email links to specific pages in the UX
- Enable end users to update notification preferences
- Enable end users to turn specific notification types on or off



## Anaplan Platform



### Enterprise scale

The Anaplan platform connects your entire enterprise, scaling as you grow and handling real-time changes at any size. Calculations stay consistent and rapid for all data sets and any number of users.

### Extensibility

The Anaplan platform collects and analyzes data in a single location, enabling both high-level and granular analyses and facilitating data-sharing with all stakeholders. APIs, ETL connectors, and built-in integrations easily communicate with other solutions.

### Planning and modeling

Our in-memory Hyperblock® engine enables multi-dimensional scenario modeling with unlimited constraints, allowing companies to model even the most complicated business scenarios and stay ahead of changes in the market. The platform maintains 100% consistency across all model changes.

### Engaging user experience

The Anaplan user experience puts the whole enterprise on a single platform. Model-building is intuitive and requires zero coding knowledge. The whole company shares real-time data across devices and solutions, enabling rapid decision-making and unprecedented flexibility.

### Security

Robust protection keeps your business's data safe. Best-in-class security and compliance include BYOK, role-based access control, user management, SSO support with SAML 2.0 compliance, and data encryption at rest.

### Intelligence

Embedded optimization including Optimizer™, over thirty predictive algorithms, and evolving AI capabilities transform complicated inputs into actionable recommendations. Machine learning intelligence speeds up decision-making across use cases.

## About Anaplan

Anaplan, Inc. (NYSE: PLAN) is a cloud-native enterprise SaaS company helping global enterprises orchestrate business performance. Leaders across industries rely on our platform—powered by our proprietary Hyperblock® technology—to connect teams, systems, and insights from across their organizations to continuously adapt to change, transform how they operate, and reinvent value creation. Based in San Francisco, Anaplan has over 20 offices globally, 175 partners and approximately 1,500 customers worldwide.

To learn more, visit [Anaplan.com](https://Anaplan.com)